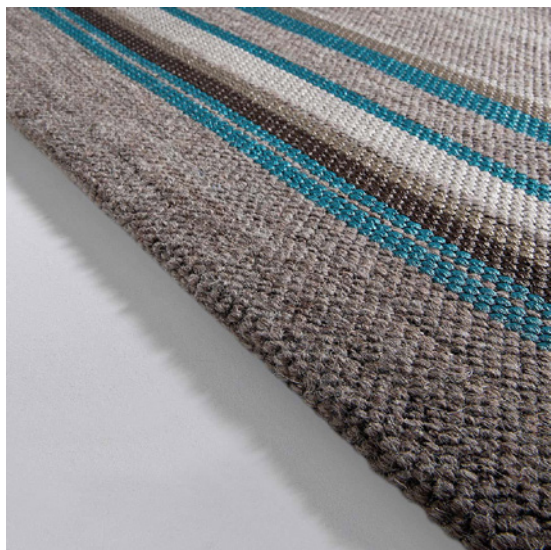




LIMITED EDITION

# TRIBU GLAM



View complete collection at [www.le.be](http://www.le.be)

## Technical Details

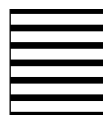
- **Production Method:** Mechanically woven
- **Composition:** 76% wool, 24% polyester
- **Border:** No additional finish necessary
- **Wall-to-wall:** Not available
- **Total weight:** 2670 g/m (78,77 oz/yd)
- **Total height:** 10 mm (0,39 inches)
- **Application:** Residential use

## Available sizes

180 x 280 cm (5'11" x 9'2")  
380 x 380 cm (12'6" x 12'6")  
380 x 480 cm (12'6" x 15'9")

280 x 380 cm (9'2" x 12'6")

Custom sizes available.



## Special Care

Vacuum regularly (without brush) - blot stains immediately if necessary with very little water but dry instantly with white absorbing paper and hair dryer. We recommend the services of a professional carpet cleaner.

## Remarks

This product is manufactured using artisan skills. The irregularities are not manufacturing defects but the deliberate differences in tone, colour and texture are there to add to the carpet's original and unique character.



[WWW.LE.BE](http://WWW.LE.BE)